



**ameta**  
MetaPro



**Material Handling Equipment**

## Retail Customers: Online & Offline

amazonbasics

 stanza  
living

amazon

 SMART  
POINT

 dci  
MARKETING

 ADISHWAR  
adishwarestore.com

 BonKaso

 easyday  
pados ki dukaan

 SMART  
BAZAAR

 Reliance  
fresh

 flipkart  
.com

 Shell

 Lijelaung

 JioMart

 EXTRADE®

 bigbasket

 DMart

 VISHAL MEGA  
MART™



Prime **60,000 Sq Ft** Industrial Property  
Adjacent to Port

- **Founded-** 2009
- **Ownership-** Privately owned
- **Location-** Chennai, India
- **Factories-** Two well-equipped
- **Products-**
  - Digital-first consumer products
  - Retail fixtures and accessories
  - E-commerce warehouse equipment
- **Market Presence-**
  - Strong domestic and export footprint

- Sound understanding of key success factors for exports
- Located on the port
- 15 years experience in exports of steel products
- All licenses for exports are available
- 140 well trained & talented team members across all functions
- Culture of Integrity, Transparency, Teamwork & Innovation

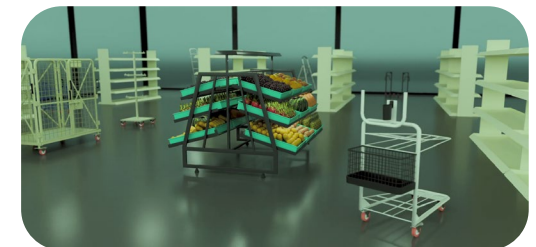
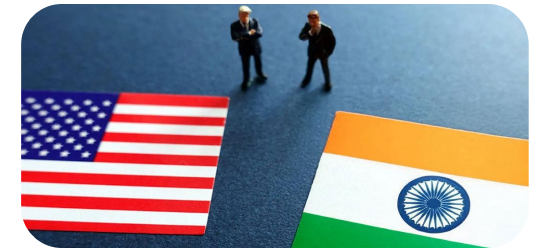


- **Strong Customer Base**

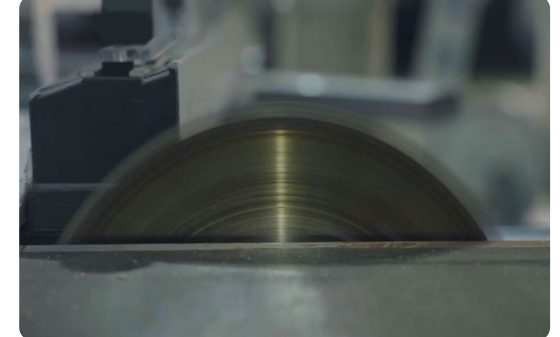
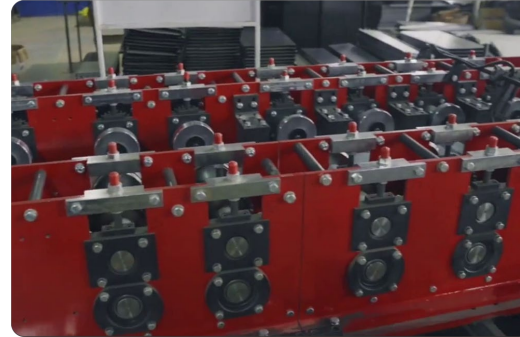
- Customers across Offline & Online retailers
- Serving top Indian retailers as a strategic supplier
- **Established as a sound China alternative for customers**

- **End to End Capability**

- Design, Manufacture, Service & Installation
- Digital Active Consumer products
- Full Range Supermarket Fixtures
- Carts / Trolleys, Workstations

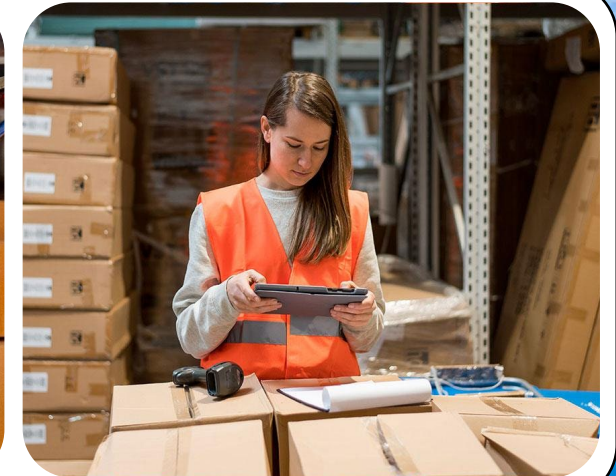


- **Full Range of Equipment, All under One Roof**
  - Roll forming
  - Tube punching
  - Power Press & dedicated tooling
  - Turret
  - Laser
  - Press brake
  - Robot welding
  - Good fabrication shop
  - Wood panel saw & auto edge banding
  - Auto spray powder coat line



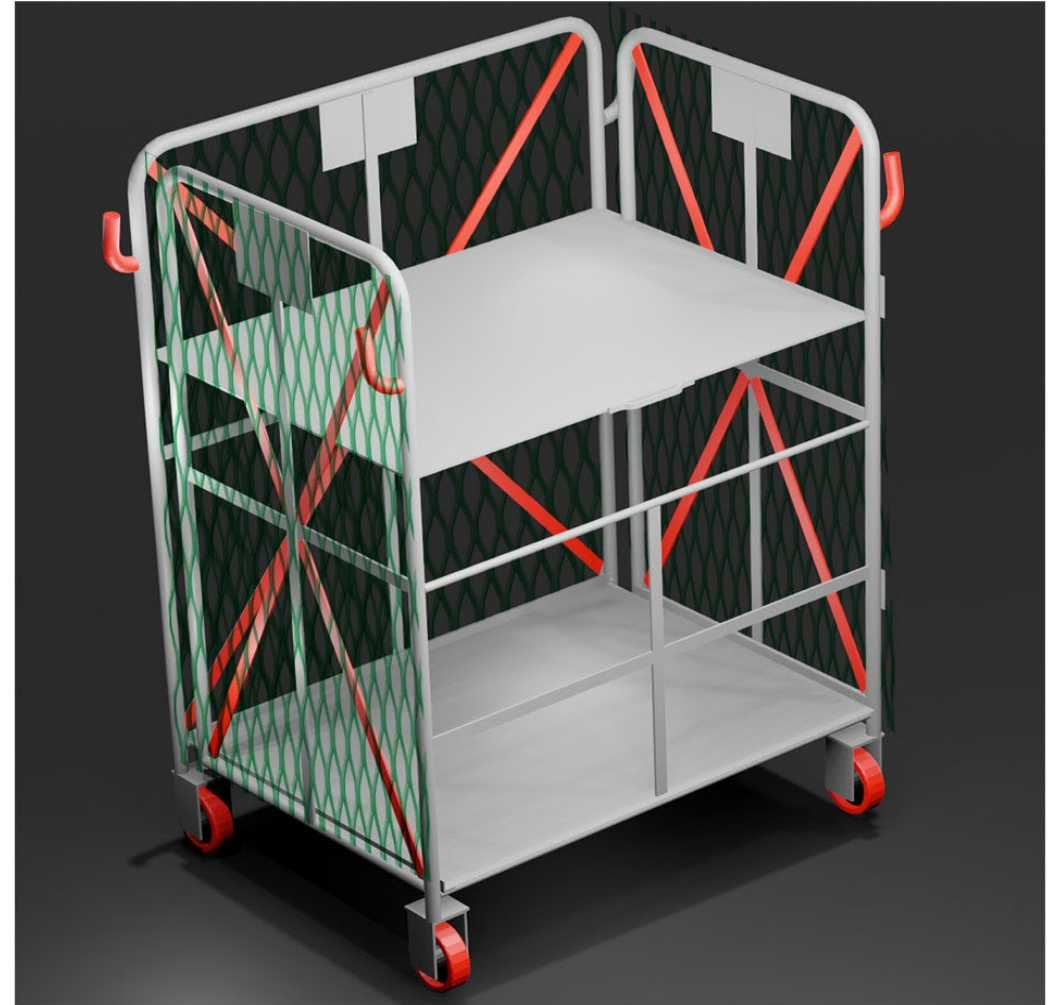
# Advanced Capabilities & Scalable Capacity for Rapid Growth

- Mfg. model designed for High Volume / High Mix business
- Sound understanding of digital retail nuances
- Processes aligned to deliver global quality such as Paint / Fabrication / Packaging
- Good Supplier base eco system around the units
- Sound factory processes to enable customer quality, cost & delivery
- Highly skilled, well trained & engaged team



- ✓ **Foldable MS Wire Mesh Trolleys for small to large packages**
- ✓ **Multiple level cage trolley-all sides closed**
- ✓ **Collapsible side fencing nylon/ MS Wire**
- ✓ **Movable compartments multiple level carts (Wire/Nylon Mesh) mesh pick carts**
- ✓ **Volumetric carts with multiple compartments**
- ✓ **U-Shaped carts**
- ✓ **L-Shaped carts**
- ✓ **Nesting efficient / stackable carts for tote baskets**
- ✓ **Multiple level stow trolley with scanner holder**
- ✓ **Specialized carts with accessories (Baskets, A4 sheet holders)**

## Foldable MS Wire/Nylon Mesh Trolley for large volume



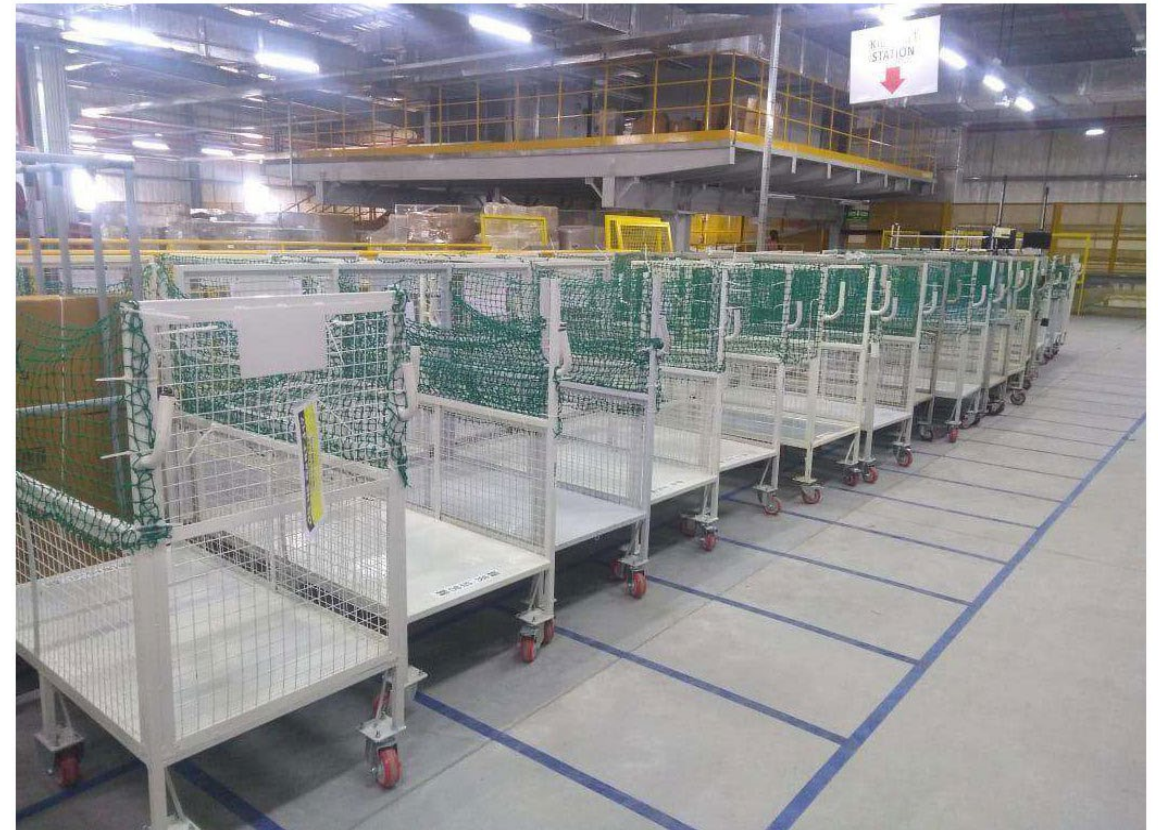
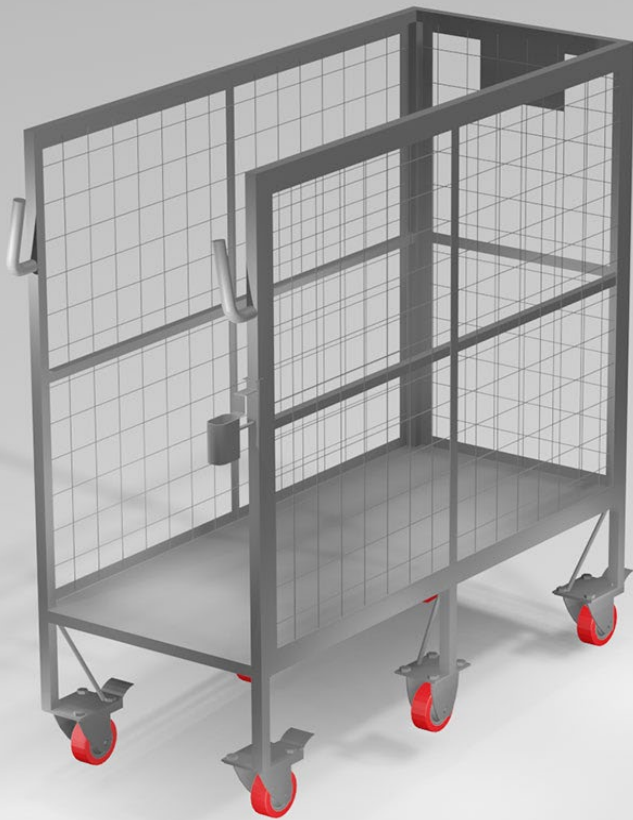
## Foldable MS Wire Mesh Trolleys for small to large packages



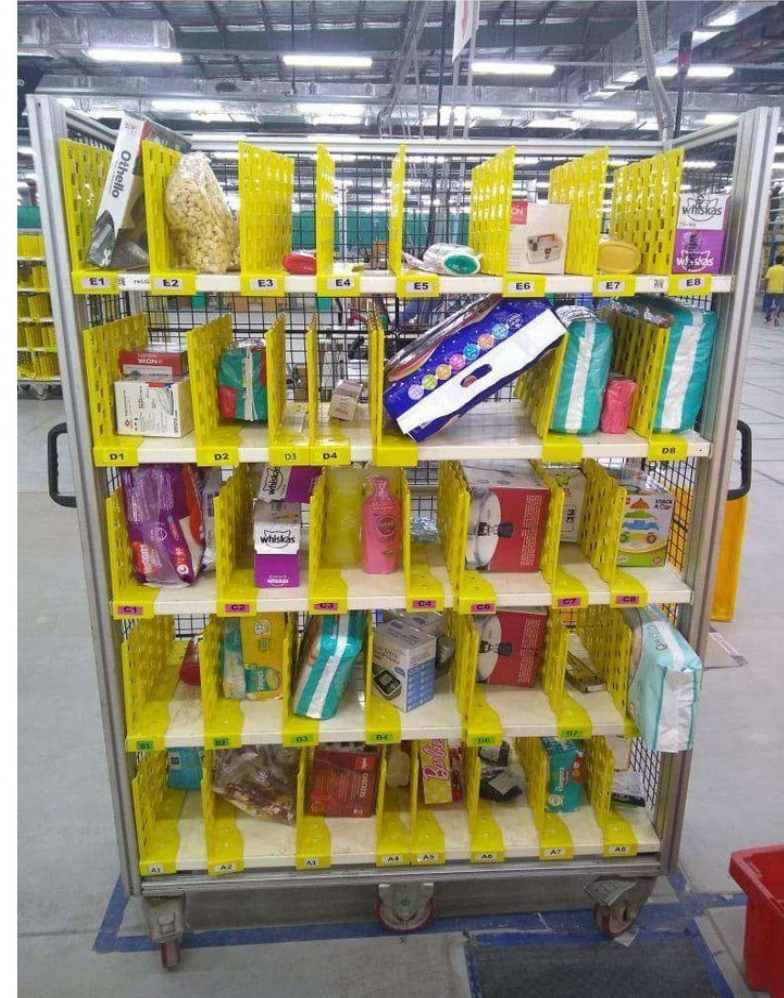
## Multiple level cage trolley-all sides closed



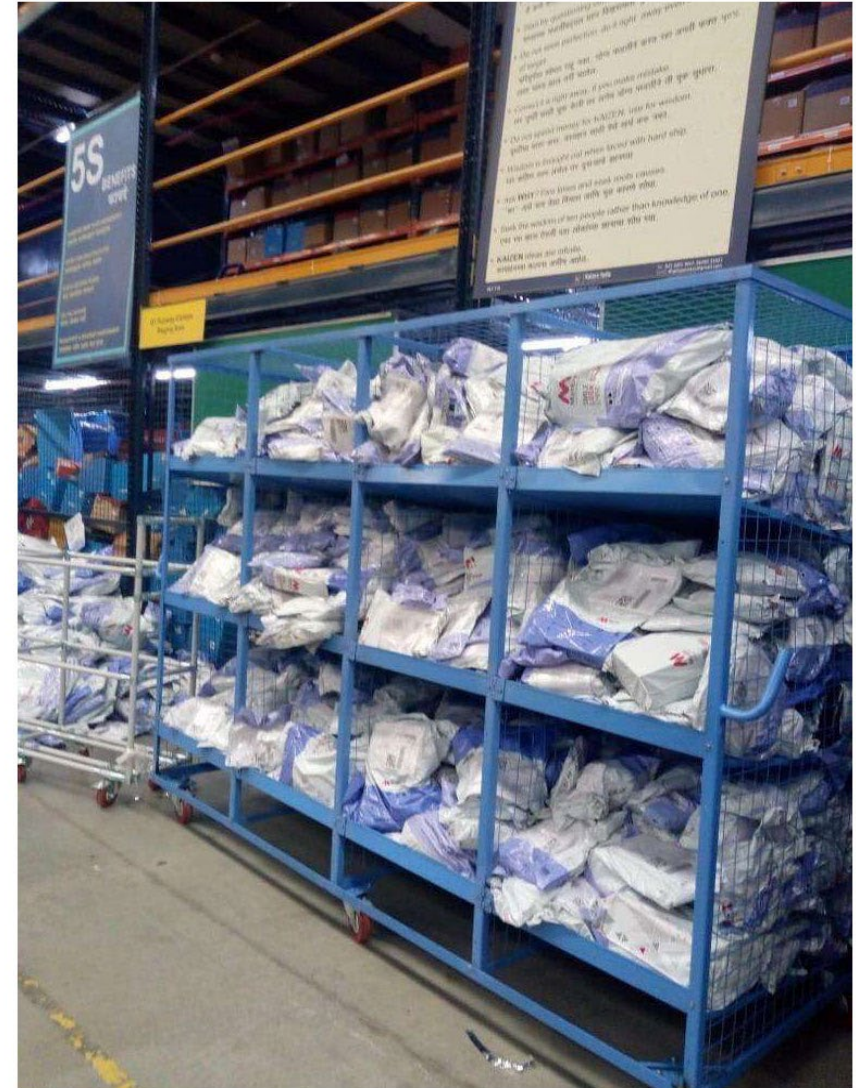
## Collapsible side fencing nylon/ MS Wire



## Movable compartments multiple level carts (Wire/Nylon Mesh) mesh pick carts



# Volumetric carts with multiple compartments



## U-Shaped heavy-duty carts



## L-Shaped carts



## Nesting efficient / stackable carts for tote baskets



## Multiple level stow trolley with scanner holder



## Specialized carts with accessories (Baskets, A4 sheet holders)



# Trolleys



## Workstation tables



## Workstation tables



**If you have a requirement for any other products made of steel, contact us at the below email ID**

[sales@sameta.in](mailto:sales@sameta.in)

[arpit@sameta.in](mailto:arpit@sameta.in)

[anirban@sameta.in](mailto:anirban@sameta.in)



**Thank you**

[sales@sameta.in](mailto:sales@sameta.in)

[arpit@sameta.in](mailto:arpit@sameta.in)

[anirban@sameta.in](mailto:anirban@sameta.in)